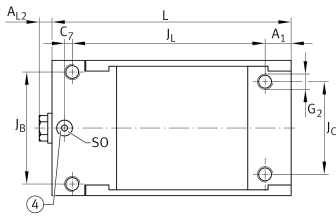
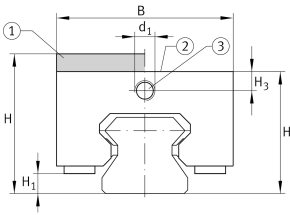
**BKE.TSX55-D-H**

Braking/clamping element

Braking and clamping element BKE.TSX...-D-H, high design, hydraulic connector on end face, for linear recirculating roller bearing and guideway assembly

Technical information



Your current product variant

Size code	55
Version	D
Design	H

Main Dimensions & Performance Data

H	80 mm	Height system
	with	Adapter plate
B	99 mm	Width of braking and clamping element
L	170 mm	Length braking and clamping element
	5.100 N	Clamping force
≈m	8,08 kg	Weight



Dimensions

J _B	80 mm	Hole pattern
J _C	72 mm	Hole pattern
A ₁	18 mm	Distance
J _L	138 mm	Hole pattern
C ₇	6 mm	Distance
H ₁	17 mm	Space (system)
H ₃	11,75 mm	Mounting dimension
A _{L2}	6 mm	Distance
d ₁	M10x1	Size thread
SO	7x1,5	O-ring
	6 mm	Max. diameter of the oil feed hole
G ₂	M12	Size thread above for DIN ISO 4762-12.9
M _A	144 Nm	Tightening torque above